



Real Time Customer Service  
**NETCUBECARE™**

ALPINION's E-CUBE systems can be accessed remotely using our NET CUBE CARE service for efficient troubleshooting. NET CUBE CARE, ALPINION's unique network-based access service, enables the ALPINION customer care team to provide instant support and keep your system up to date with the latest upgrades. The NET CUBE CARE is a purchasable option - please contact the ALPINION service team at [service@alpinion.com](mailto:service@alpinion.com) for further inquiries.

ALPINION MEDICAL SYSTEMS  
*"We are Ultrasound Professionals"*



### ALPINION MEDICAL SYSTEMS

Verdi Tower, 72, Digital-ro 26-gil, Guro-gu, Seoul, 08393, Korea  
Homepage [www.alpinion.com](http://www.alpinion.com)  
E-mail [international@alpinion.com](mailto:international@alpinion.com)  
TEL +82-2-3282-0900  
FAX +82-2-851-5591

  
**ECUBE11**  
Touch your daily practice

Standalone clinical images may have been cropped to better visualize pathology.

Microsoft and Windows are trademarks of Microsoft Corporation.  
Intel Core is Intel Corporation's brand name.



Copyright©2014 ALPINION MEDICAL SYSTEMS CO.,LTD. All rights reserved.  
Catalogue contents may change without prior notice to customers due to performance enhancements.

MKT-E11-PC-E1604-V.1.0



# Touch your daily practice

## Now it's your turn that EC-11 make you moved.

Throughout the years, your feedback has driven all our technological advancements, helping us to move forward and offer even better care options as part of the E-CUBE series. We've listened to what customers had said, and continued to expand the E-CUBE family of products with the newest addition to the range, the E-CUBE 11.

We've introduced a new, more intuitive design and offer support and updates for the entire life of the product without the need for additional investment. The new E-CUBE 11 ultrasound system with scalable architecture enables you to keep up with the latest advancements so that you can stay focused on caring for your patients.

Quality healthcare is now more accessible than ever before, thanks to the E-CUBE 11 that features innovative technologies.



### Smart Workflow

Maximize workflow efficiency & patient throughput with Innovation at your fingertips



### Better Performance

Optimize presets with enhancement of digital imaging processing algorithms



### Best Patient Care

Give you diagnostic edges with migration of ALPINION's most advanced applications and technologies to the new E-CUBE 11

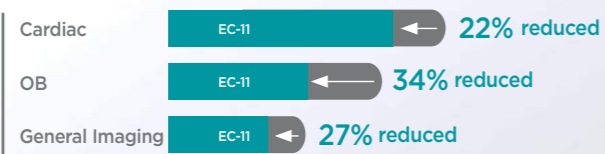


# Smart Workflow

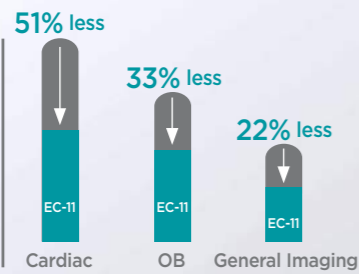
## Make work smarter and more productive

To enhance exam efficiency, E-CUBE 11 has been re-designed to simplify and streamline day-to-day workflow. Our intuitive, tablet-like touchscreen interface is designed to reduce reach and button pushes. It also enables you to focus more on your patients with quick responses and precise key selection.

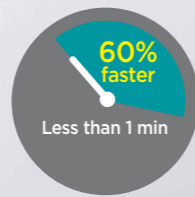
Reduced exam time\*



Less key strokes\*



Faster boot-up time\*



\* Compared with a conventional system



10.4 –inch capacitive touch screen, high-resolution display with Instant Response technology allowing for **quick and precise key selections**



Expanded number of programmable user keys provides **simplified and personalised user controls**



Integrated Solid-state drive (SSD) applied, primarily beneficial in your exam



- Rapid Boot-up
- More stable data protection
- Less Data Loss
- Faster Response time for data Read & Write



Industry-leading computational speed processor (Intel® Core™ i7) Microsoft® Windows® 7 Integration meets the computer requirements:

- to rapidly deliver very high quality images
- to improve network security and system stability
- to enhance compatibility with electronic medical systems



21.5 –inch Wide Full HD LED with IPS (In-Plane Switching) technology



- Wide Full HD LED monitor, the largest in its class
- Provides a wider viewing angle for reduced eye strain
- Delivers enhanced contrast resolution



Simple sliding removal and reattachment of air filter for easy cleaning

Full Color Backlit LED Control Panel and keyboard help you to easily locate the key position and type under a range of lighting conditions



Digital and tactile sliding keyboard offers improved flexibility to meet varying user preferences

Wireless LAN for PACS data transfer without any space restriction

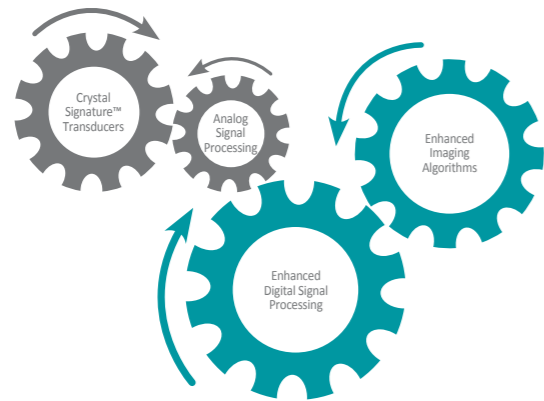




# Better Performance

## Performance to go further

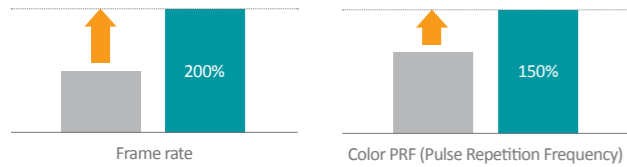
E-CUBE 11 provides consistent image quality, enabled by our enhanced digital signal processing and imaging algorithms. Optimized integration with our advanced engineered transducer maximizes the image quality. Outstanding detail with less artifacts means that you can diagnose with confidence.



### Frame Rate Increasing Technology

Breaking the compromise of conventional architecture between frame rate and image quality.

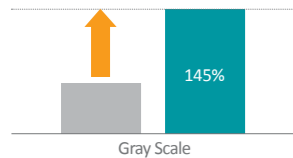
You can experience both highly detailed ultrasound images and superior temporal resolution in high frame rate. Comparing E-CUBE 11 to conventional systems breakthroughs that have been made in imaging performance.



\* Compared with a conventional system  
\* The results may differ depending on exam mode or transducer used.

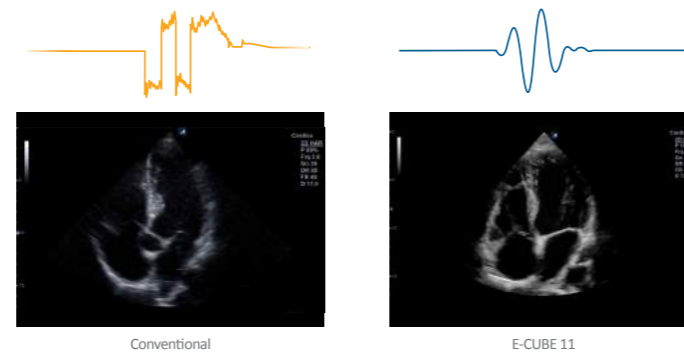
### Adaptive Post Processing

The newly advanced post processing introduces a high-performance image filter which is adapted differently by each application. Using the powerfully optimized and advanced signal algorithm, Optimal Imaging Suite™(FullSRI™, SCI™, FCI™) provides exceptional detail, clearer border definition and a wider gray scale in tissue.



\* Compared with a conventional system

### HD Digital Beam Forming



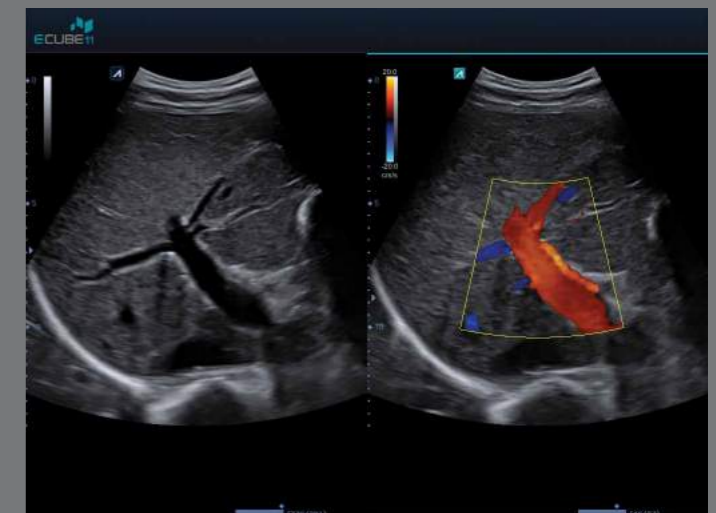
The advanced platform with HD Digital Beam Forming powering E-CUBE 11 enables you to get outstanding image resolution "especially in near field," consolidating uniformity.

### Crystal Signature™



Crystal Signature™, ALPINION's world leading single crystal technology, provides higher sensitivity, better penetration, and less heat degradation than traditional PZT materials. With the single crystal volume convex transducer (SVC1-6H) - an industrial first - E-CUBE 11 fully supports excellent 3D/4D imaging for various diagnoses.

- Frame Rate Increasing Technology
- Adaptive Post Processing
- HD Digital Beam Forming
- Crystal Signature™
- Dual imaging
- New Color Blending Map



- Frame Rate Increasing Technology
- Adaptive Post Processing
- HD Digital Beam Forming
- Crystal Signature™





# Best Patient care

## Giving you a Diagnostic Edge

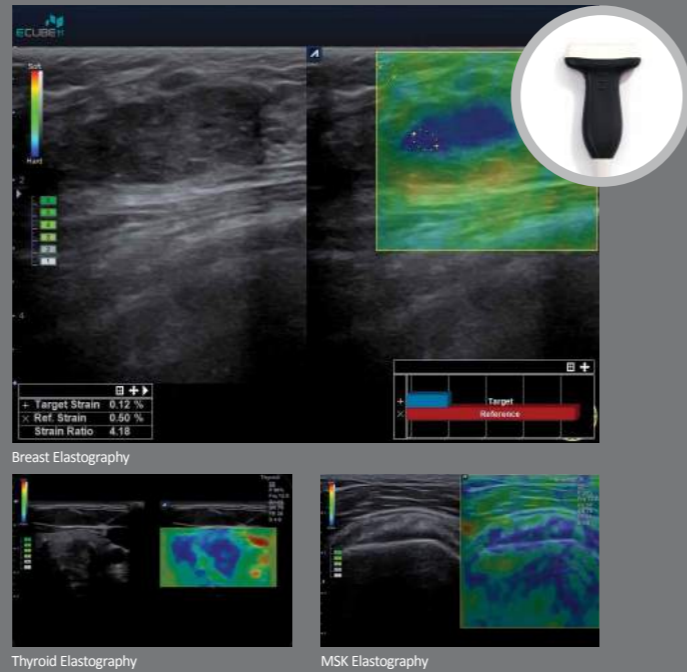
E-CUBE 11 offers a wide selection for complete exam coverage including abdominal, small parts, vascular, cardiac, musculoskeletal and OB/GYN making it the best possible choice. Our advanced imaging and automated tools help you to provide the best medical service for your patients.



### Elastography

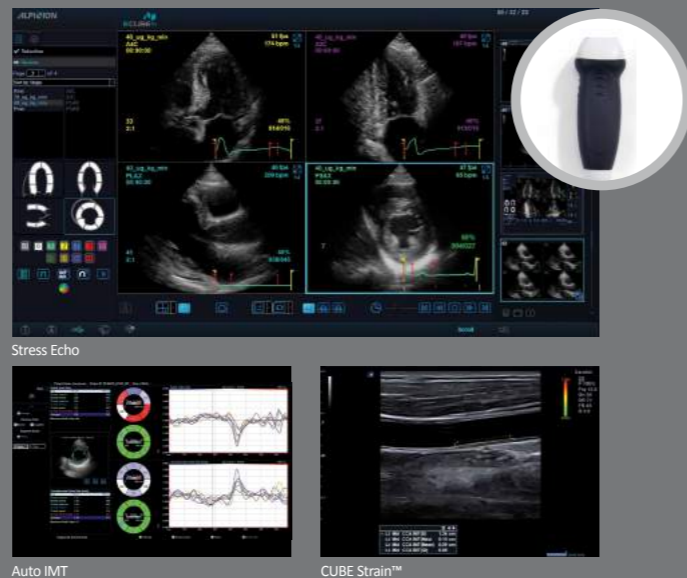
- Strain elastography: an emerging set of ultrasound to demonstrate relative tissue stiffness
- Additional information to describe pathologies and help to reduce unnecessary procedures
- Real-time feedback on the compression quality ranging from 1 to 6, helping you monitor the compression technique

- **Probe Availability** L3-12H, L3-12H<sup>WD</sup>, EC3-10H, EV3-10H, VE3-10H
- **Available Presets** MSK, Breast, Thyroid, Gynecology, Urology



### Stress Echo / CUBE Strain™ / Auto IMT

- Stress Echo**
  - Streamlines workflow of Stress Echocardiogram combined with treadmill test to provide diagnostic confidence
- CUBE Strain™**
  - Echocardiographic strain and strain-rate imaging: a non-invasive method to assess myocardial function
  - 2D speckle tracking technology allowing angle-independent analysis for more accurate assessments
- Auto IMT**
  - Allows you to automatically measure intima-media thickness of carotid arteries
  - Enables more reliable and reproducible assessment



### Volume Master™ / LIVE HQ™

- Volume Master™** (3D/4D rendering technology)
  - Enables you to obtain reproducible planes and better anatomical views which are not possible with 2D scanning
  - Multi Planar Rendering, Cube CT, and Multi Slice View provide the clinical benefits of CT or MRI
- LIVE HQ™**
  - Volume rendering tool to show more realistic images
  - Helps you to better understand the anatomical characteristics

- **Probe Availability** SVC1-6H, VE3-10H
- **Available Preset** OB/GYN



### DPDI / Needle Vision™, Needle Vision™ Plus / Panoramic Imaging

- DPDI** (Directional Power Doppler Imaging)
  - Highly enhanced sensitivity with directional information
  - Useful to detect low speed blood flow in peripheral vessels: kidney vessels and Middle Cerebral Artery
- Needle Vision™**
  - Beam steering technology provides better visualization of a needle tip and shaft
- Needle Vision™ Plus**
  - Perform more confident needle procedures with the assurance of accuracy and patient safety
  - Ultimately helps to reduce the procedure time
- Panoramic Imaging**
  - Provides a more readily understood image of the anatomical relationship between structures
  - Encompasses large structures in a single view



# Transducers

Developed and manufactured by ALPINION for unrivalled acoustic performance

Single Crystal Transducer High-density Transducer A biopsy kit is available

## Convex



**SC1-6H** High density Single Crystal  
OB, GYN, Fetal Echo, Abdominal, Renal, Emergency Medicine

**SC1-4HS** Wide angle high density Single Crystal  
Abdominal, Renal, OB, GYN, Fetal Echo, Emergency Medicine

**SC1-4H** High density Single Crystal  
Abdominal, Renal, OB, GYN, Fetal Echo, Emergency Medicine

**SVC1-6H** High density volume Single Crystal  
OB, GYN, Fetal Echo, Abdominal

## Endocavity



**EC3-10H** High density  
Urology, GYN, OB, Fetal Echo, Emergency Medicine

**EV3-10H** High density  
GYN, OB, Fetal Echo, Emergency Medicine

## Volume Endo



**VE3-10H** High density  
GYN, OB, Fetal Echo, Urology

## Linear



**L3-12H** High density  
Carotid, Peripheral Vascular, Thyroid, Testicle, MSK, Breast, Emergency Medicine

**L3-12H<sup>WP</sup>** High density, 64mm Wide footprint  
Breast, Thyroid, MSK

## Phased Array



**NSP1-5** Single Crystal  
Adult Cardiac, Deep Abdomen, Transcranial Doppler, Emergency Medicine

## Pencil



**CW5.0** Pencil typed transducer  
Peripheral Vascular (Deep Venous and Arterial)

**CW2.0** Pencil typed transducer  
Adult Cardiology (Deep Arterial), Transcranial

※ Certain transducers may not be available for use in some countries

# At a glance



**CUBE View™**  
Real time Image sharing  
Remote access with a tablet PC or a smart phone



## Specification

- Size (W x D x H): 590mm x 895mm x 1455 -1695mm
- Weight: 94kg
- 21.5 - inch wide Full HD LED monitor
- 10.4 - inch HD touch screen (Capacitive)
- Articulating monitor arm
- Adjustable control panel
- 3 active probe port + 1 pencil CW port
- Built-in gel warmer - 3 temperature levels (31, 34, 37°C)
- OS: Windows 7
- 512GB SSD / HDD
- CPU: Intel Core i7
- DICOM 3.0 Connectivity (optional)
- Wireless LAN for PACS data transfer (optional)
- 3 lead ECG (optional)

## Back to the Ultrasound, Real ALPINION

While E-CUBE 11 surpasses the conventional concept of ultrasound performance, one thing does remain unchanged, our promise that we, ALPINION, always care about you and your patients pursuing the best quality of medical ultrasound.

**ECUBE11**  
Touch your daily practice